

ORGANIZATION CHARTS



Managed by the Division of Human Resources

WAYNE STATE UNIVERSITY

BOARD OF GOVERNORS

Richard Bernstein (Chair)

Tina Abbott (Vice-Chair)

Debbie Dingell

Eugene Driker

Diane L. Dunaskiss

Paul E. Massaron

Annetta Miller

Gary S. Pollard

Dr. Jay Noren, *ex-officio*

TABLE OF CONTENTS

Executive Administration	1
Executive Office of the President	2
Administrative Operations	3
Office of the General Counsel	4
Office of Governmental and Community Affairs	5
Office of the Provost and Senior Vice President for Academic Affairs	6
Schools and Colleges.....	7
Development and Alumni Affairs.....	8
Finance and Facilities Management	9
Research	10
University Libraries	11
School of Business Administration	12
College of Education	13
College of Engineering	14
College of Fine, Performing and Communication Arts	15
Graduate School	16
Law School	17
College of Liberal Arts and Sciences - Administration	18
College of Liberal Arts and Sciences	19
School of Medicine – Administration	20
School of Medicine – Departments	21

Table of Contents Continued

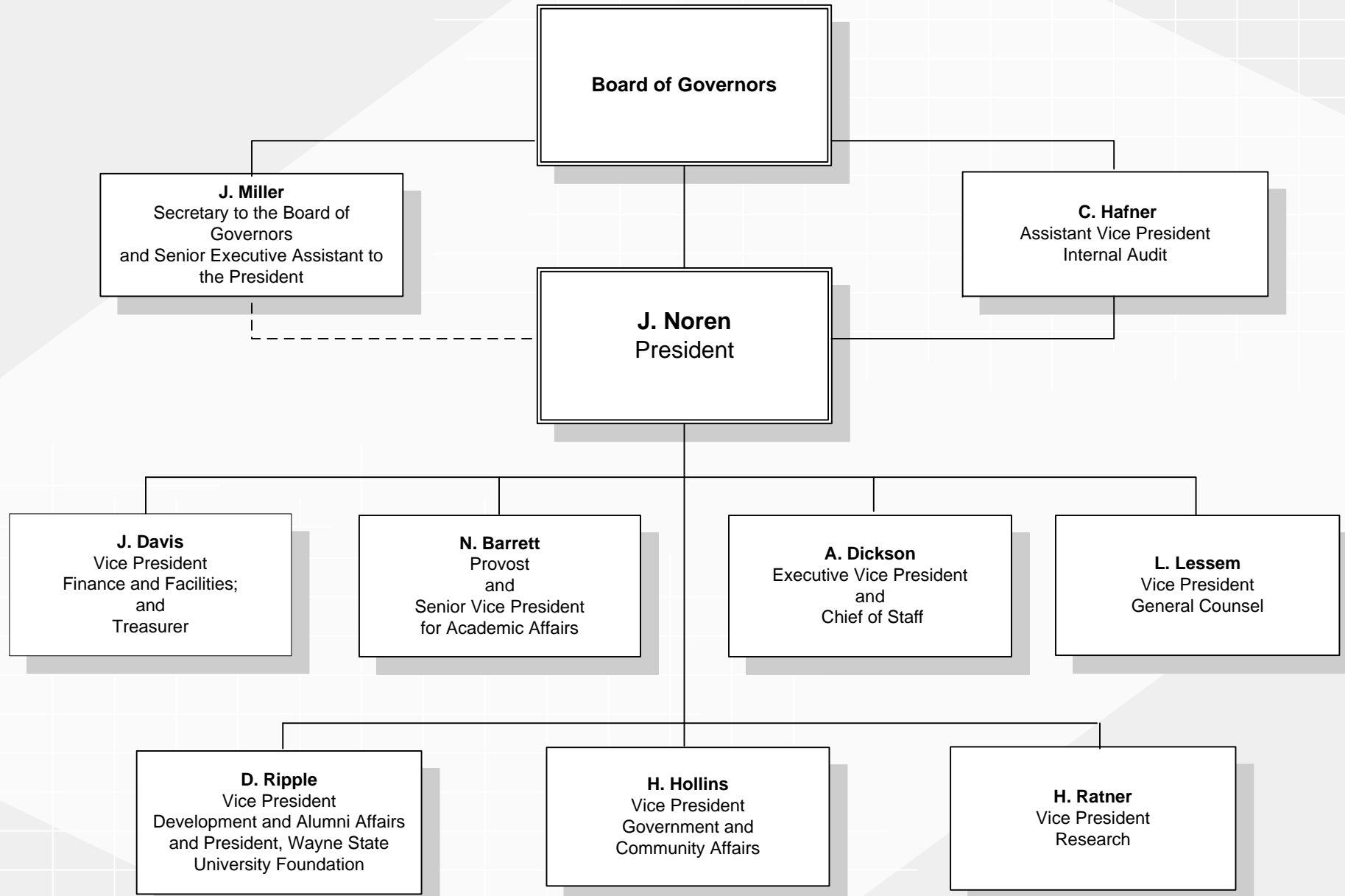
College of Nursing	22
Eugene Applebaum College of Pharmacy and Health Sciences	23
School of Social Work	24

Date of Issue: September, 2009

Please note: Organization Charts are accurate as of the date of issue.
Personnel and reporting lines may change without notice. Please forward changes to
the Total Compensation and Wellness Department in the
Division of Human Resources.

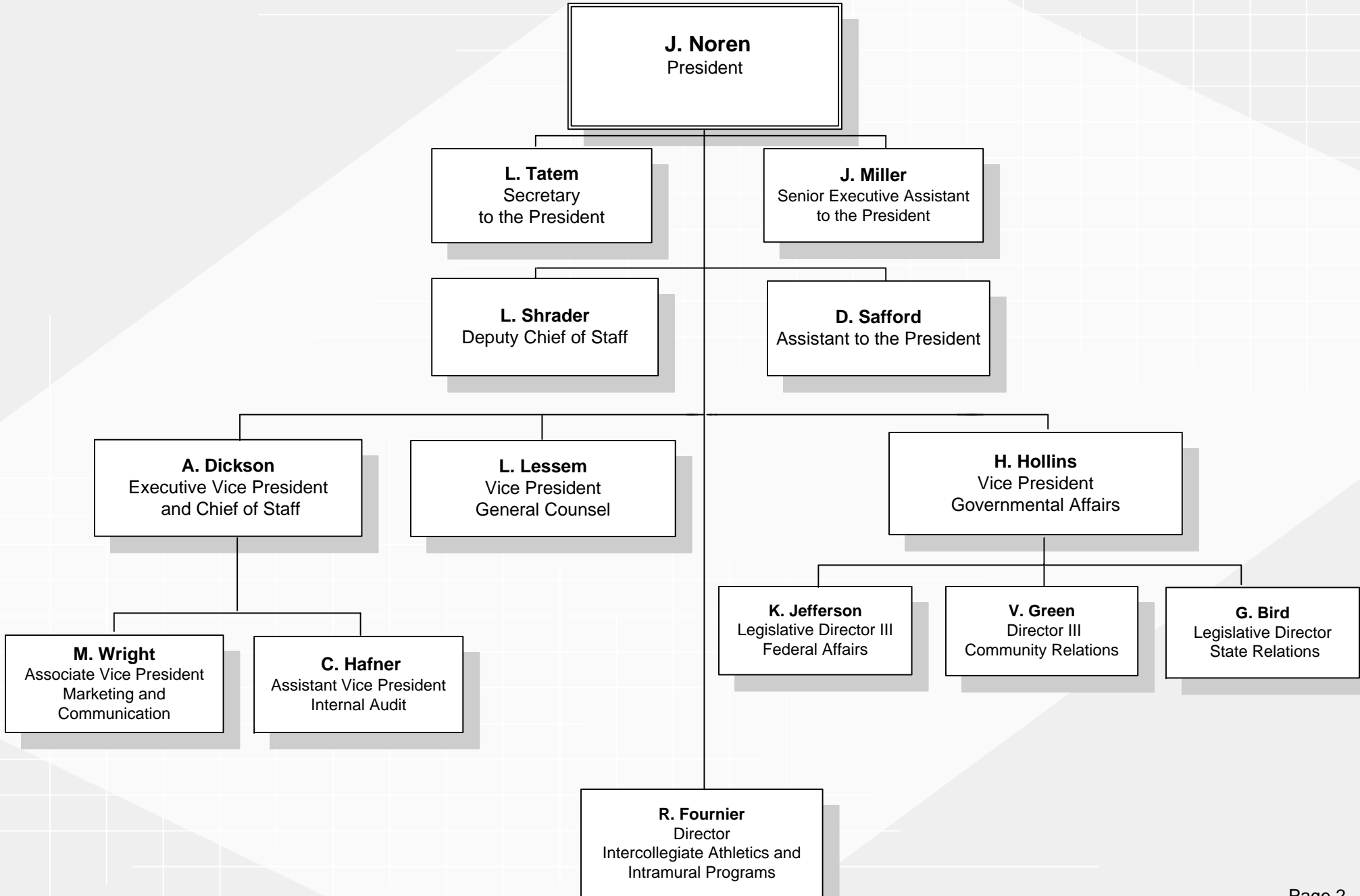
WAYNE STATE UNIVERSITY EXECUTIVE ADMINISTRATION

September 15, 2009



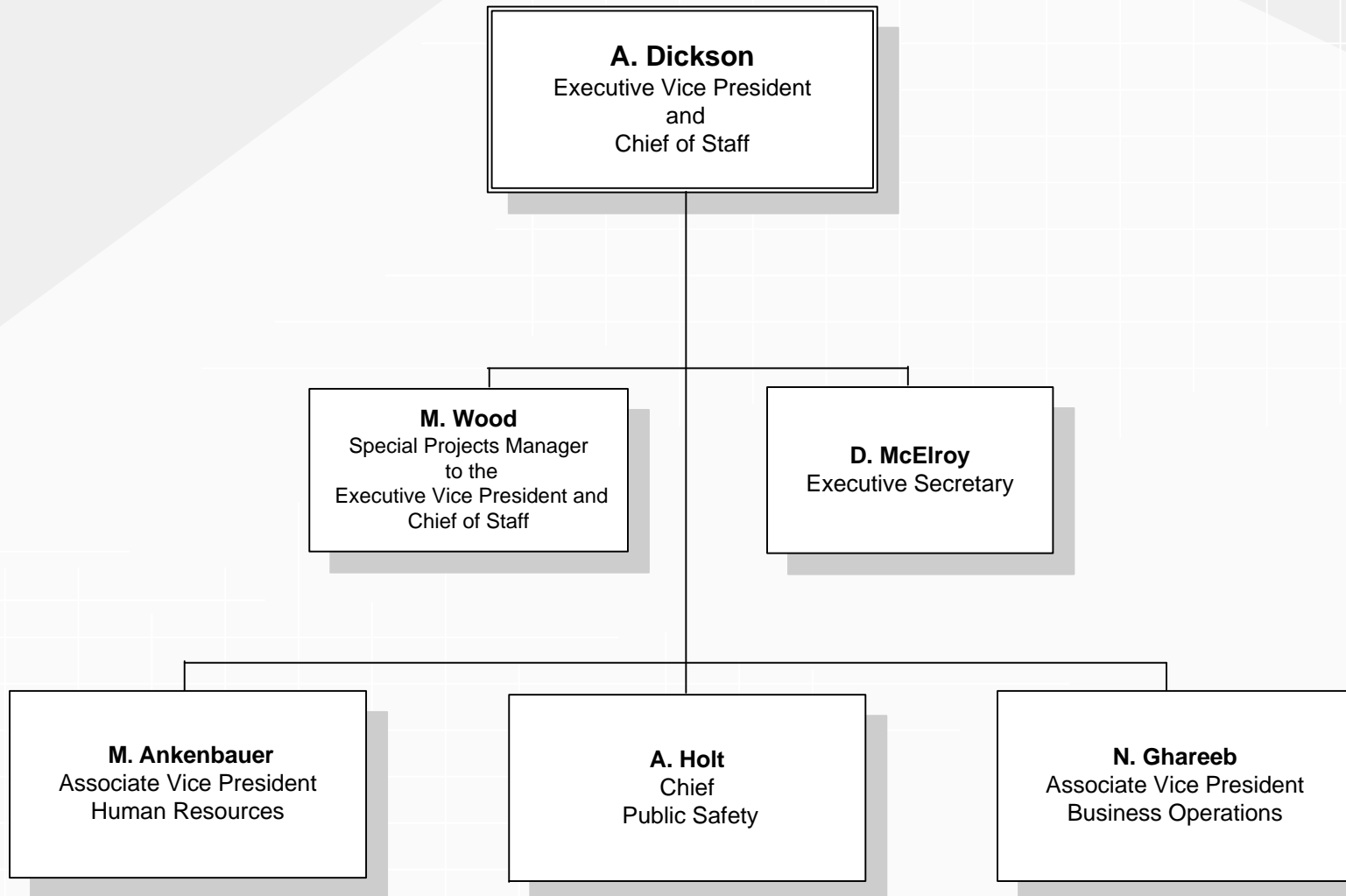
OFFICE OF THE PRESIDENT

September 15, 2009



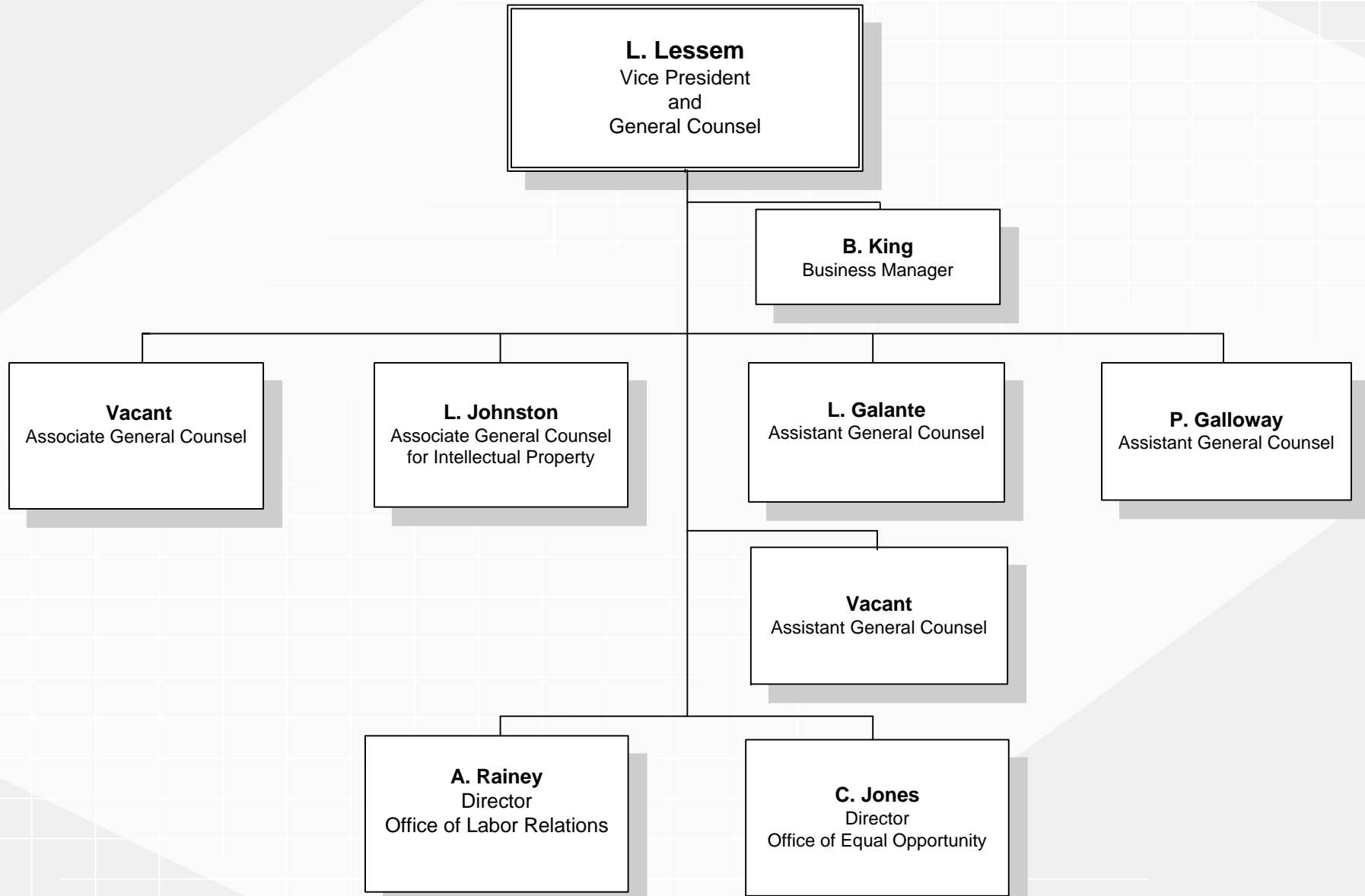
ADMINISTRATIVE OPERATIONS

September 15, 2009



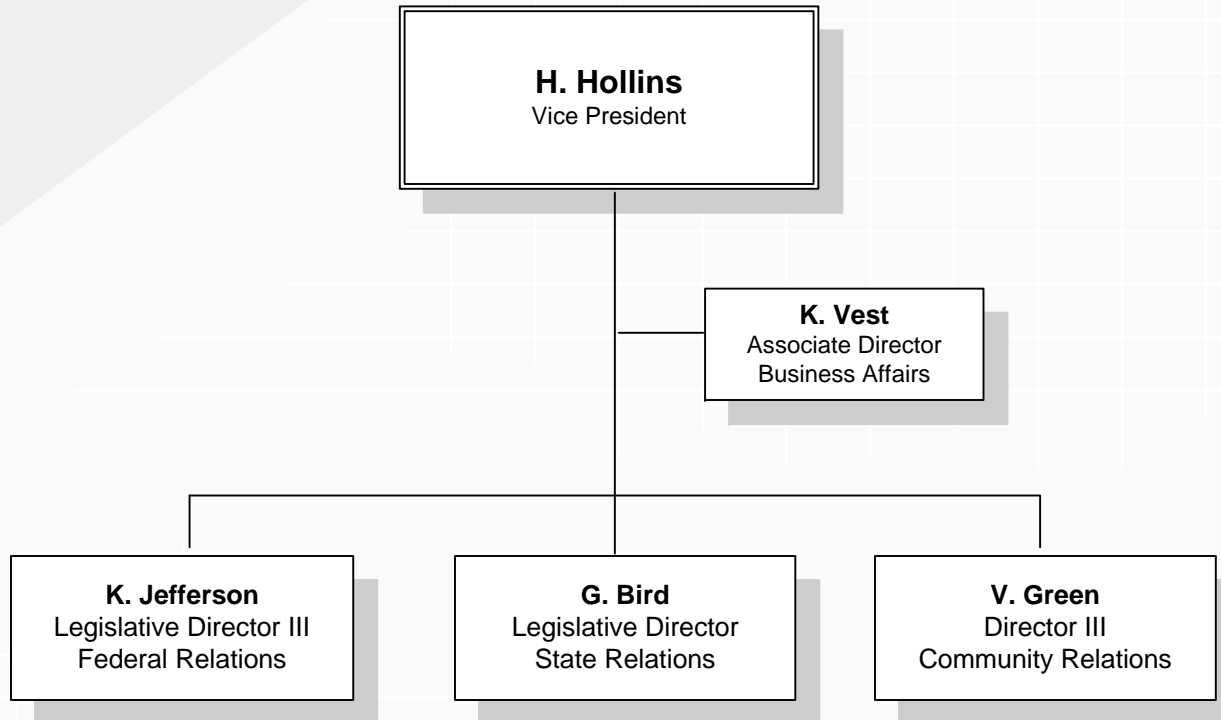
OFFICE OF THE GENERAL COUNSEL

September 15, 2009



OFFICE OF GOVERNMENT AND COMMUNITY AFFAIRS

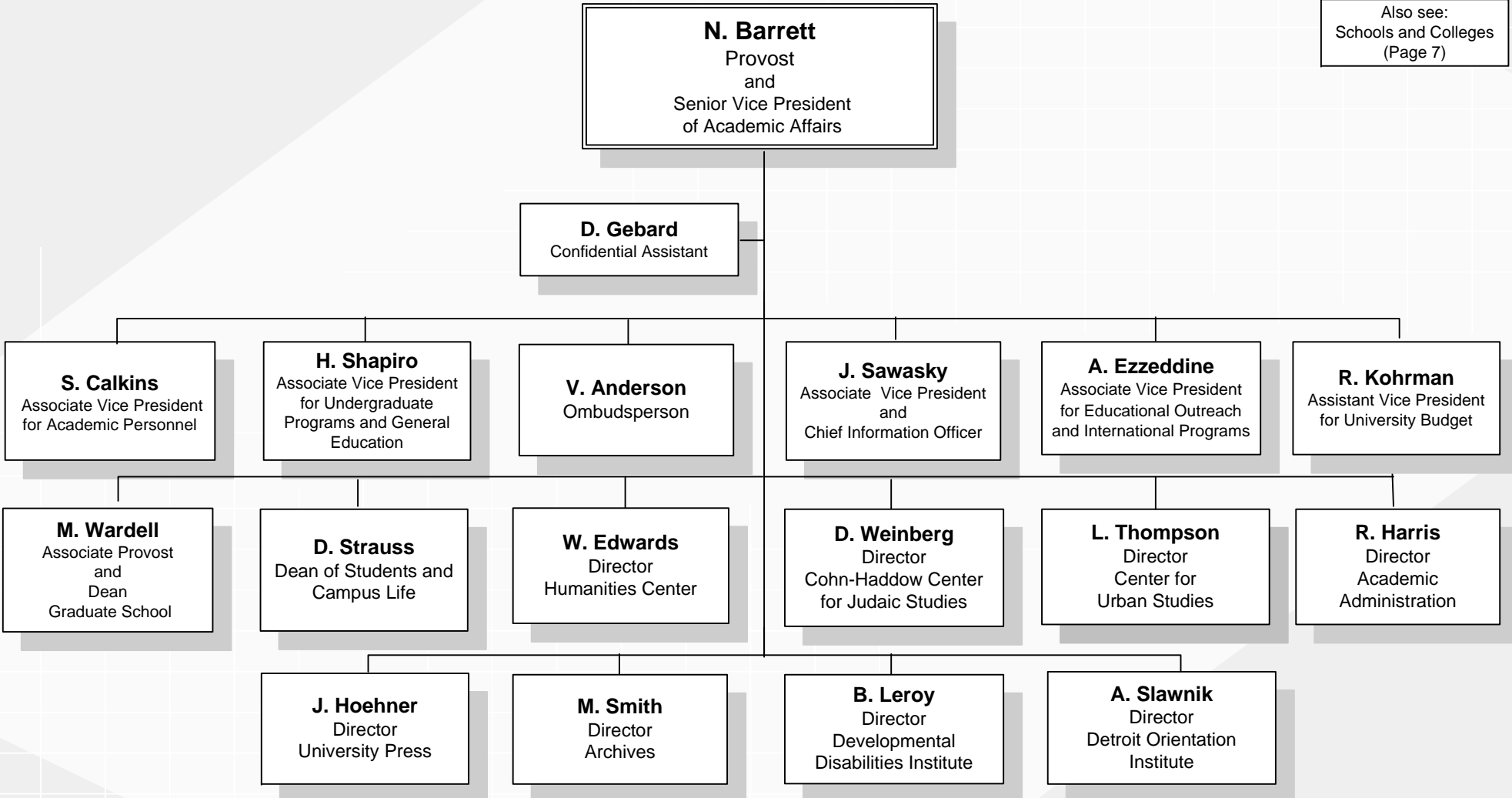
September 15, 2009



OFFICE OF THE PROVOST and SENIOR VICE PRESIDENT of ACADEMIC AFFAIRS

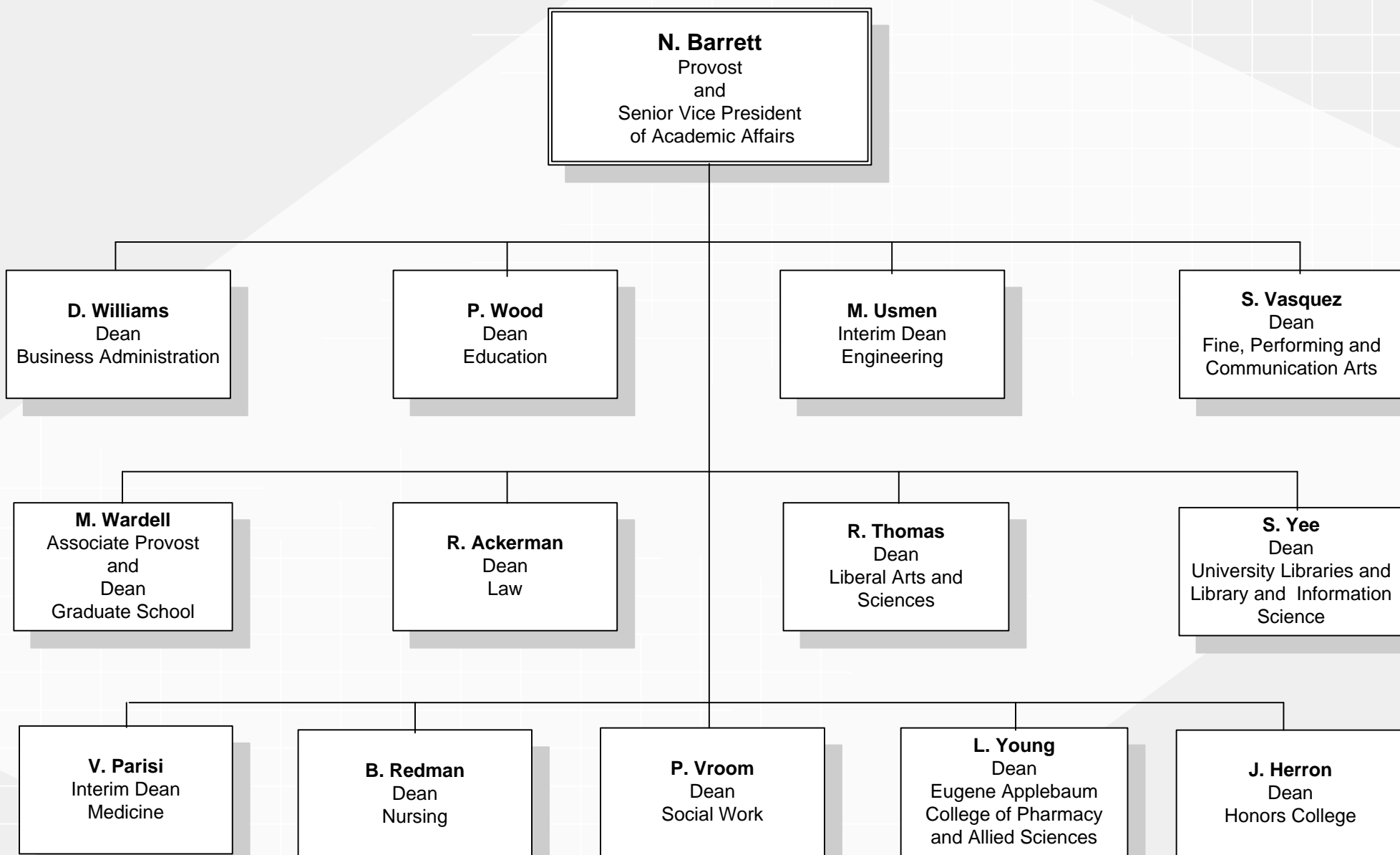
September 15, 2009

Also see:
Schools and Colleges
(Page 7)



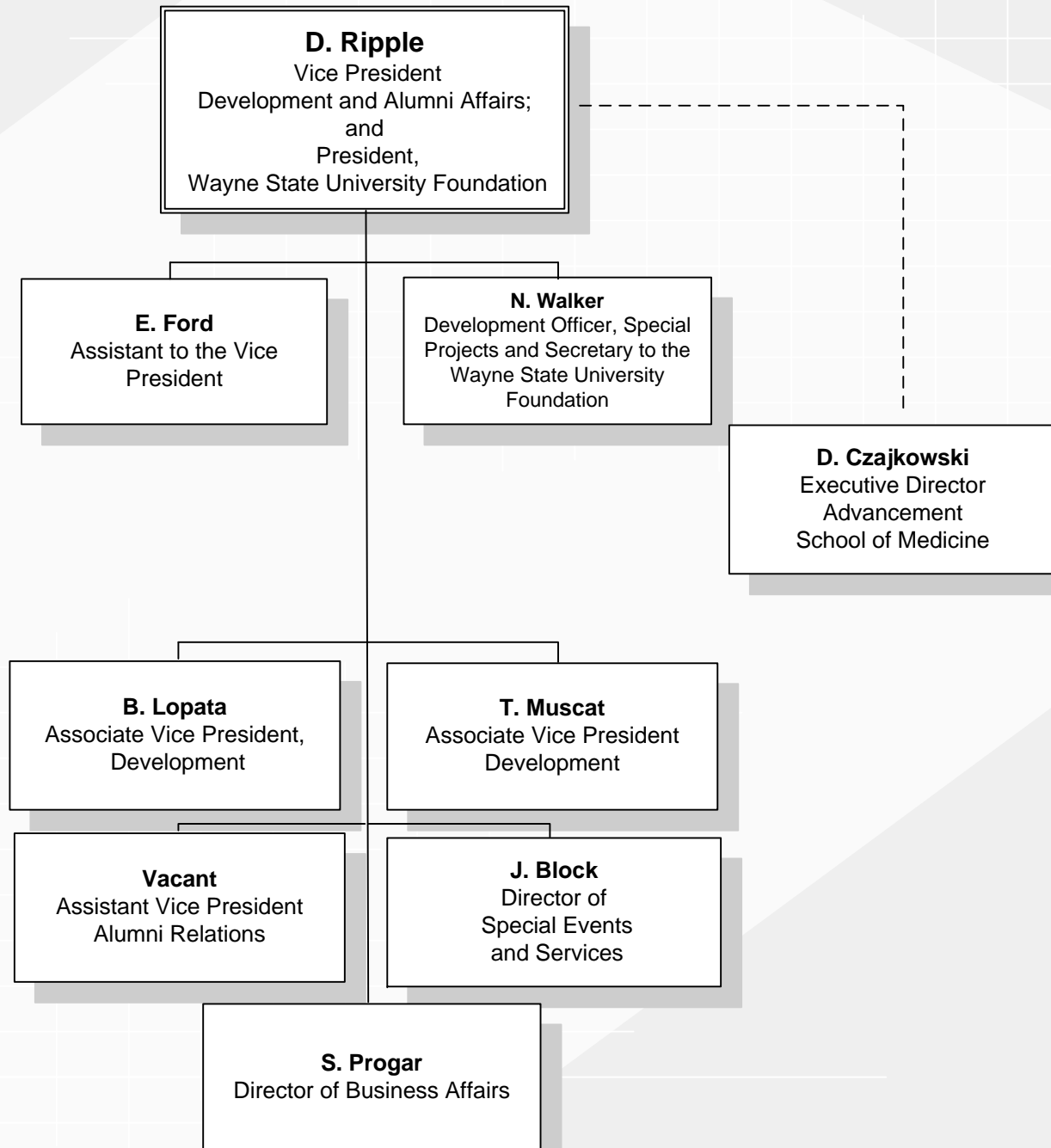
SCHOOLS AND COLLEGES

September 15, 2009



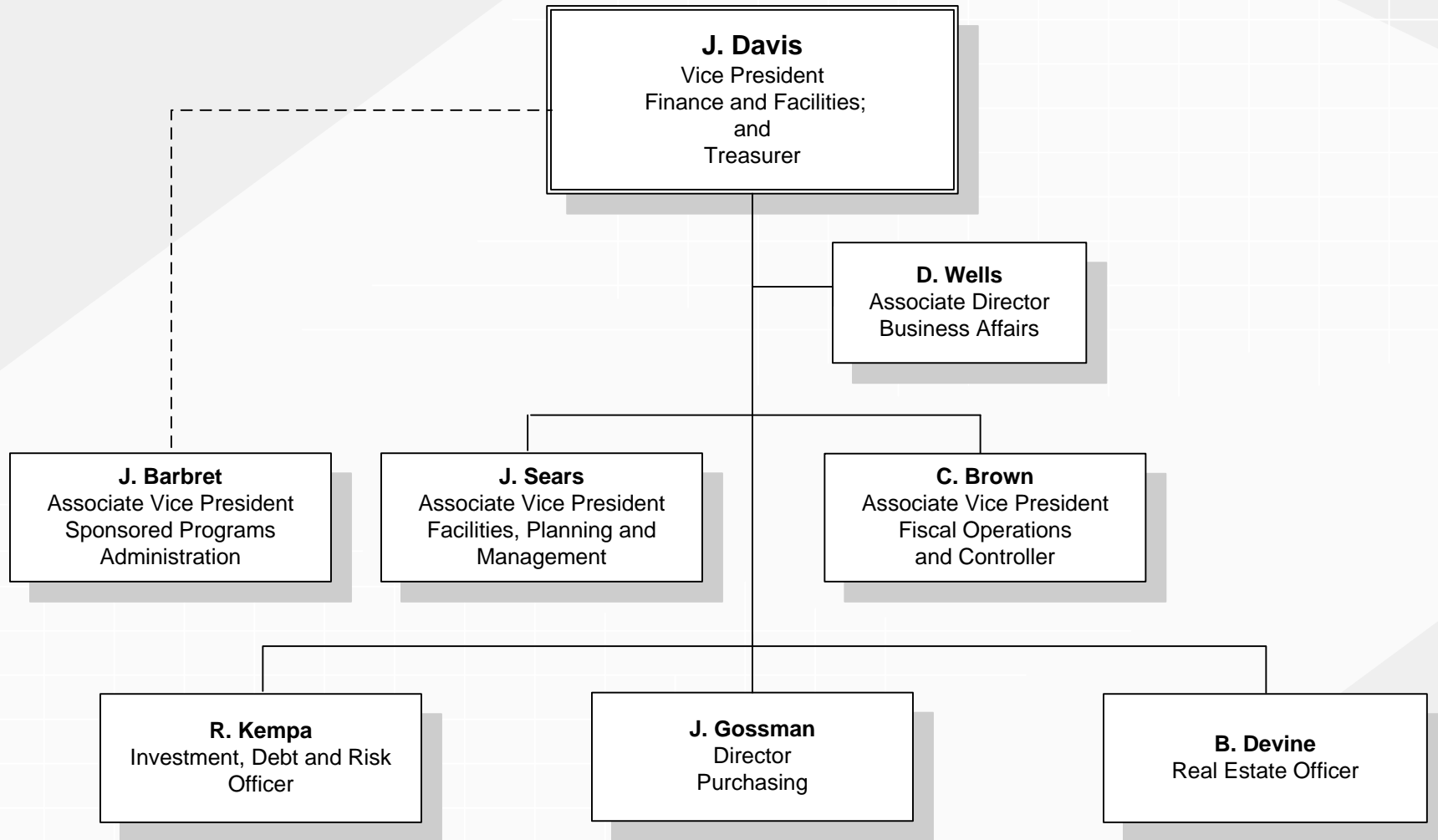
DEVELOPMENT AND ALUMNI AFFAIRS

September 15, 2009



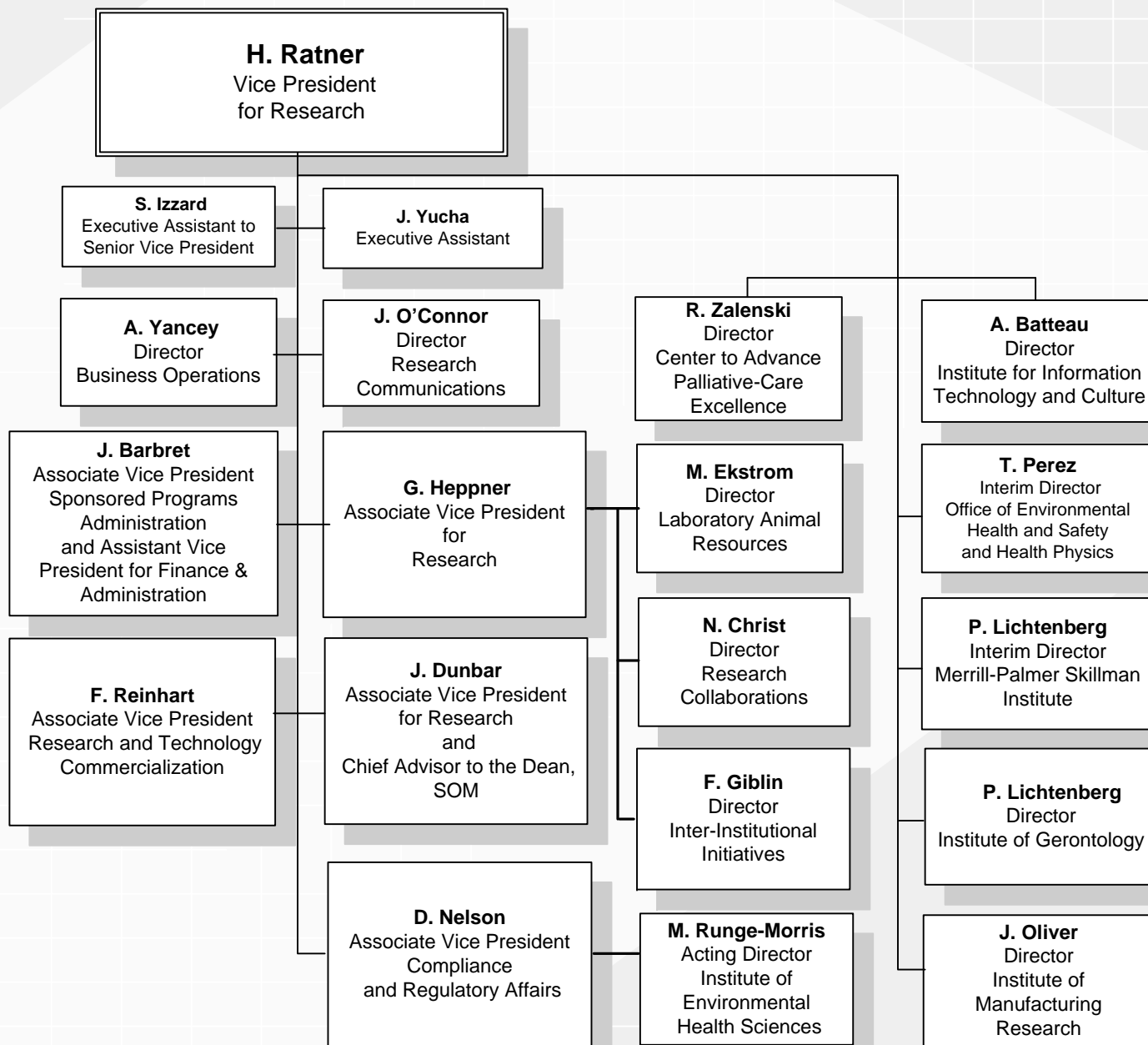
FINANCE AND FACILITIES MANAGEMENT

September 15, 2009



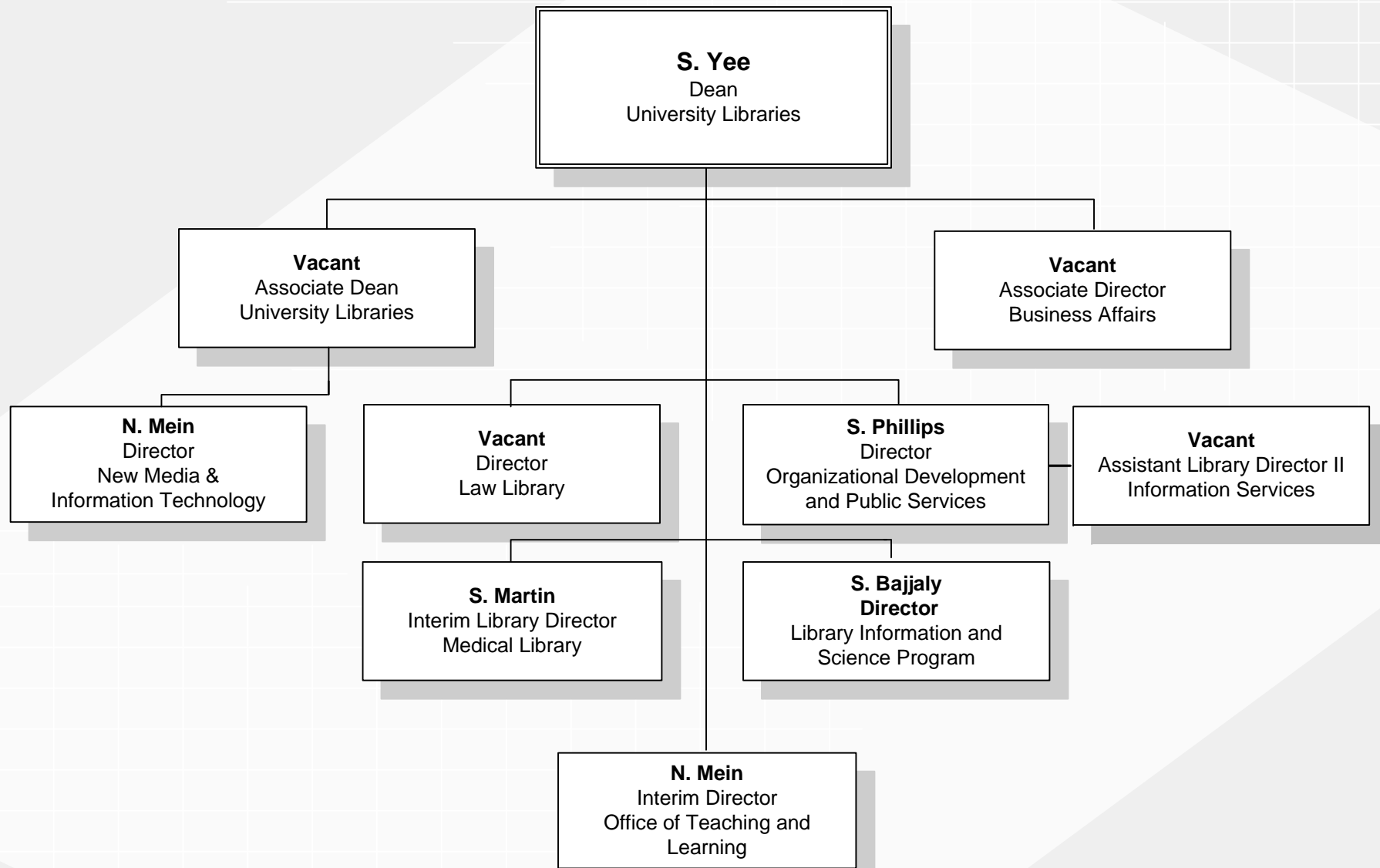
DIVISION OF RESEARCH

September 15, 2009



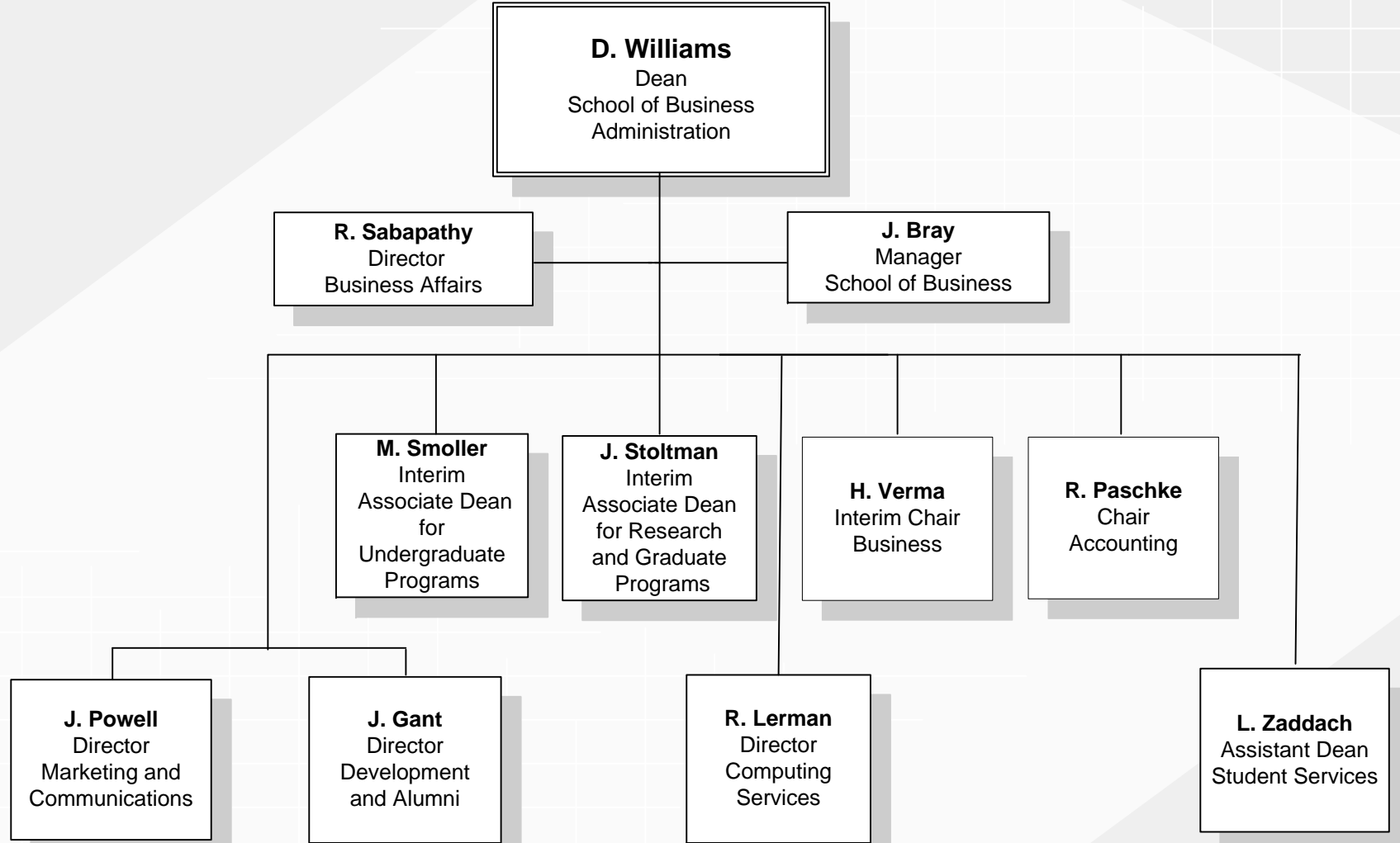
UNIVERSITY LIBRARIES

September 15, 2009



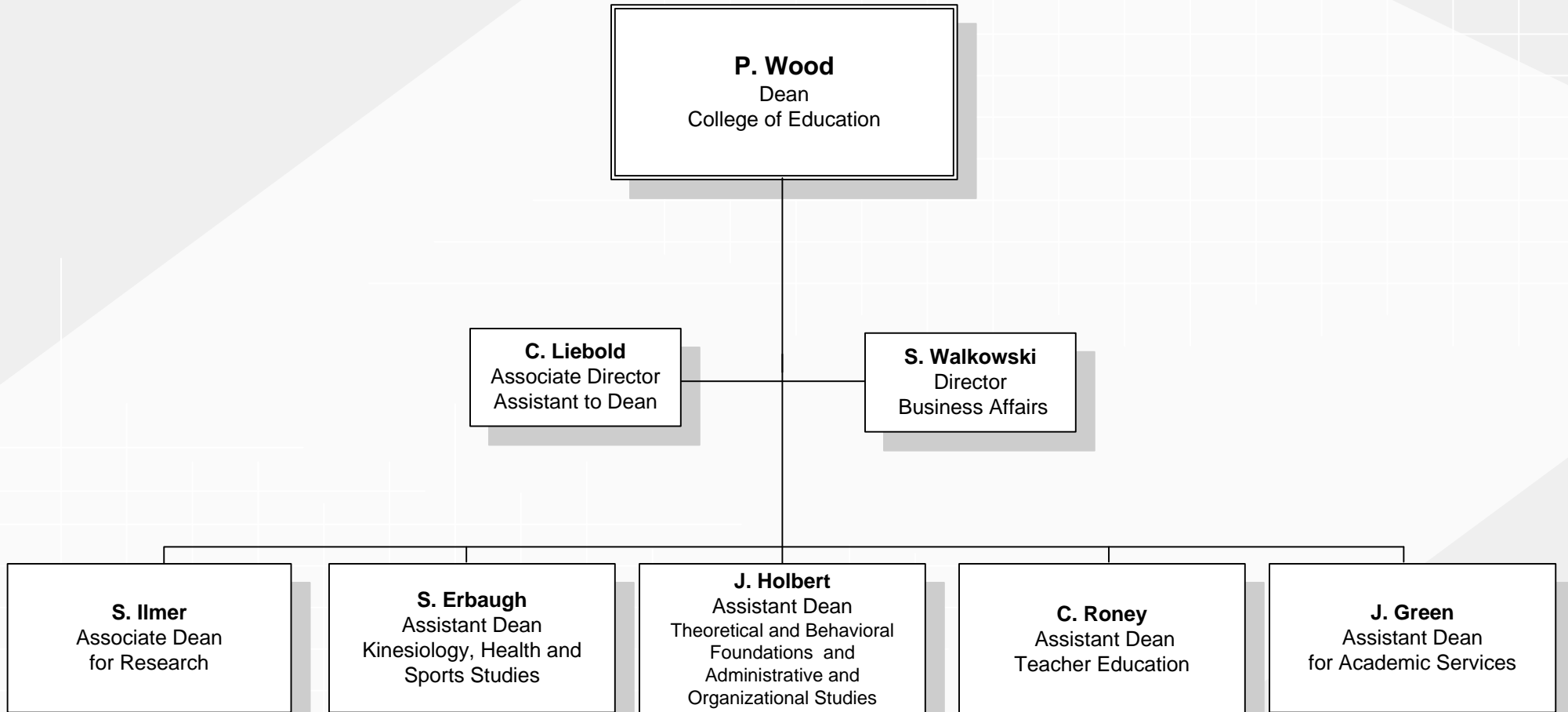
SCHOOL OF BUSINESS ADMINISTRATION

September 15, 2009



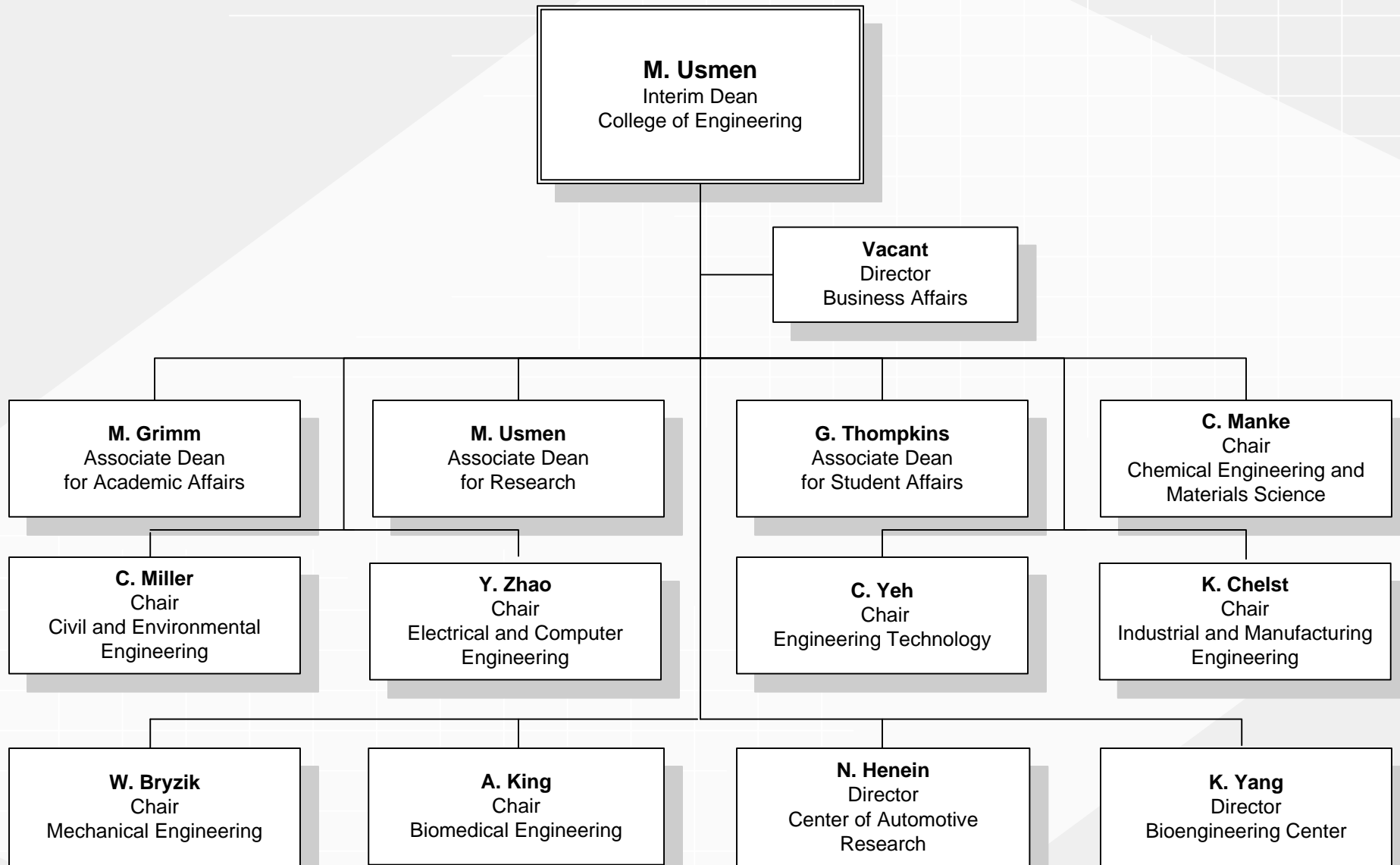
COLLEGE OF EDUCATION

September 15, 2009



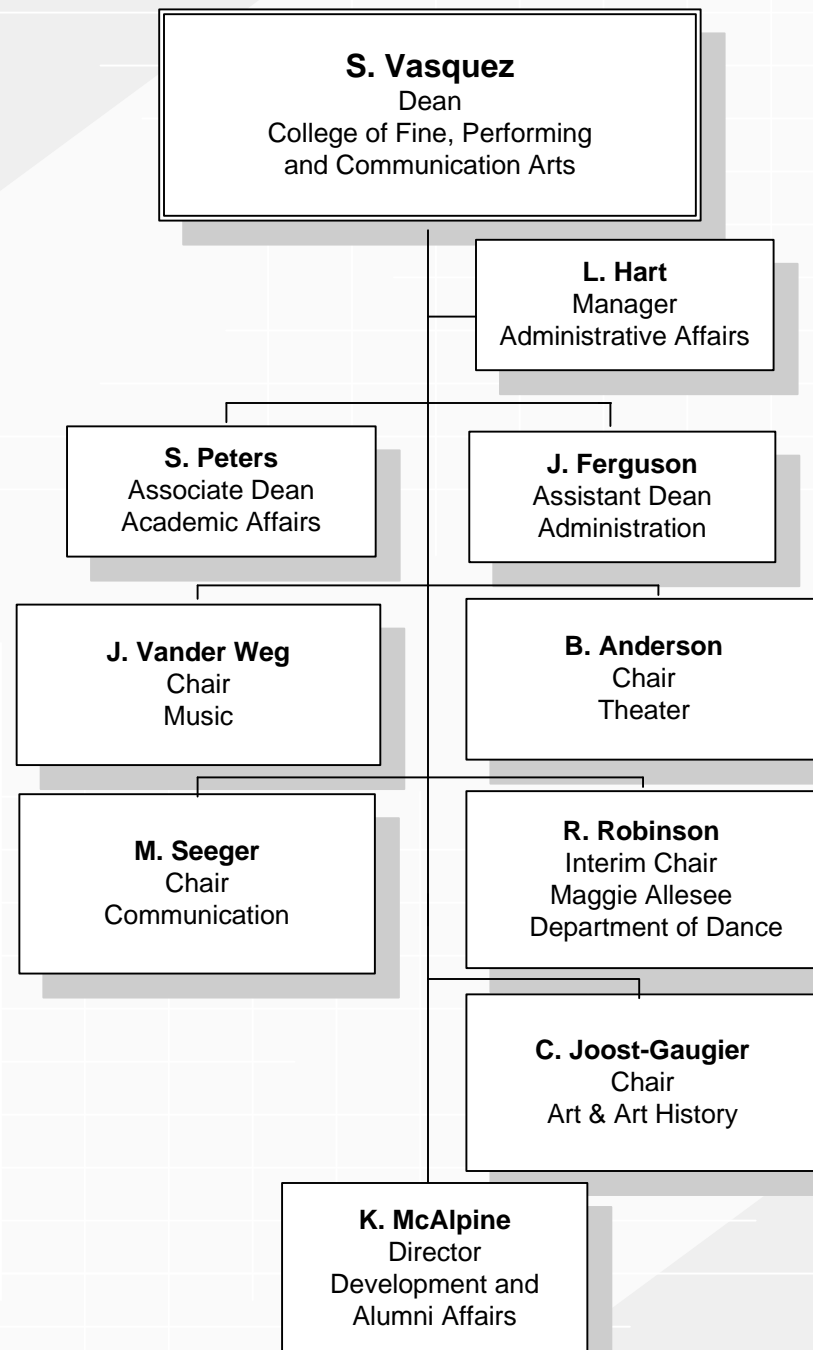
COLLEGE OF ENGINEERING

September 15, 2009



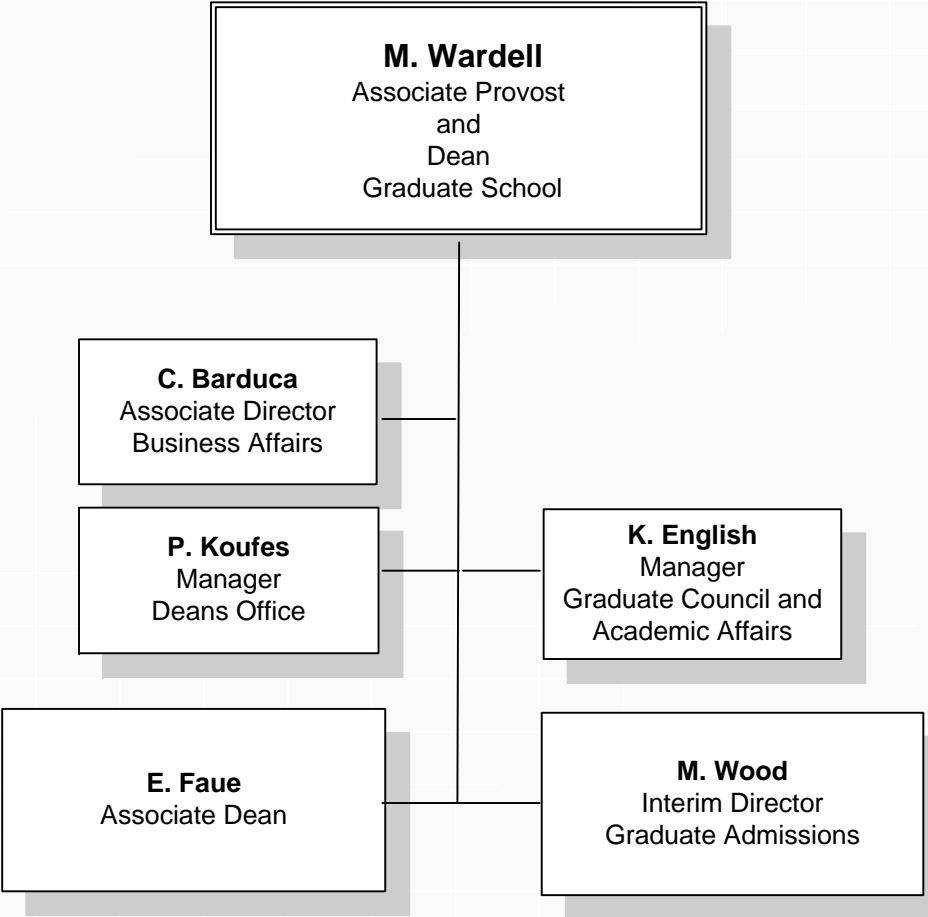
COLLEGE OF FINE, PERFORMING AND COMMUNICATION ARTS

September 15, 2009



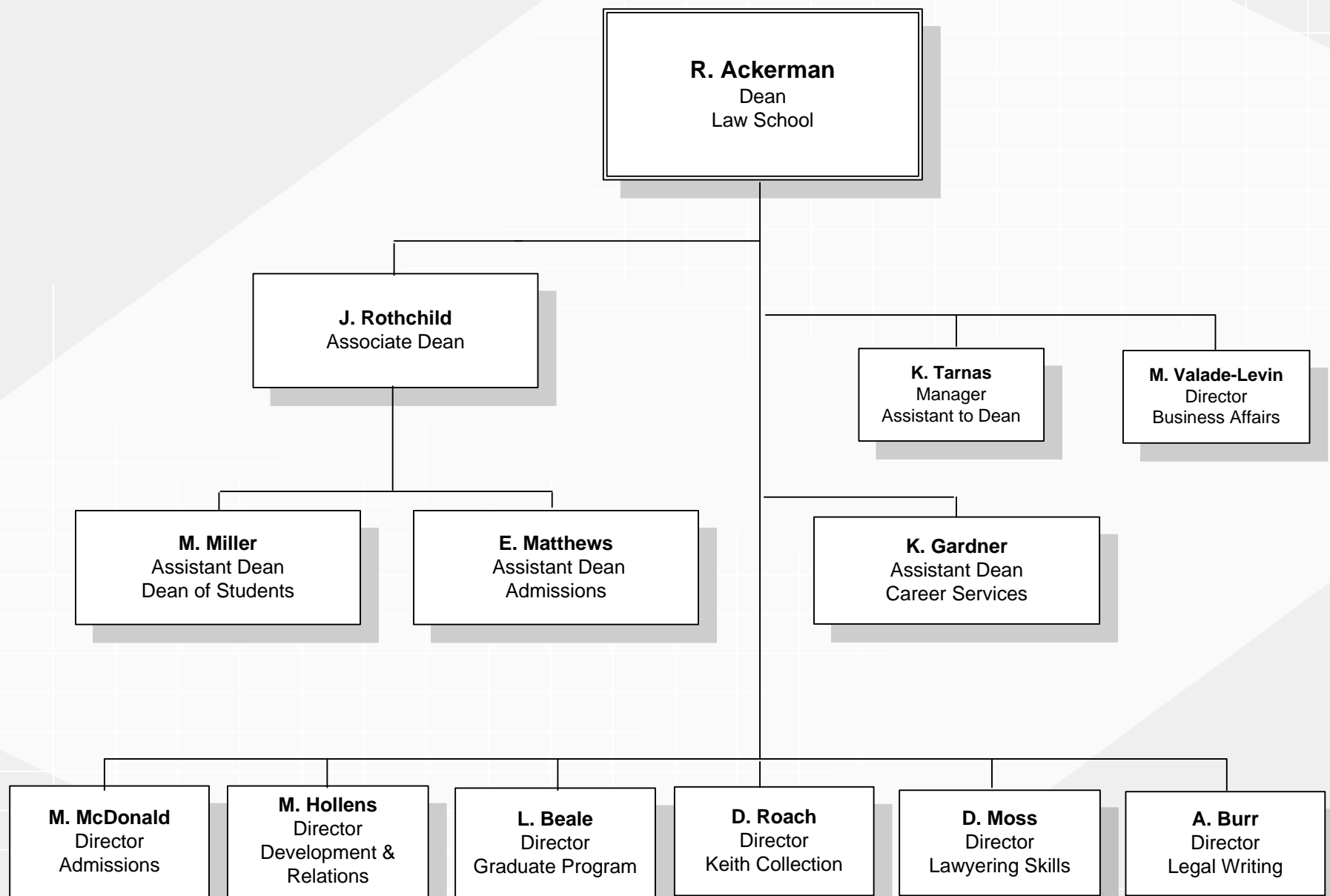
GRADUATE SCHOOL

September 15, 2009



LAW SCHOOL

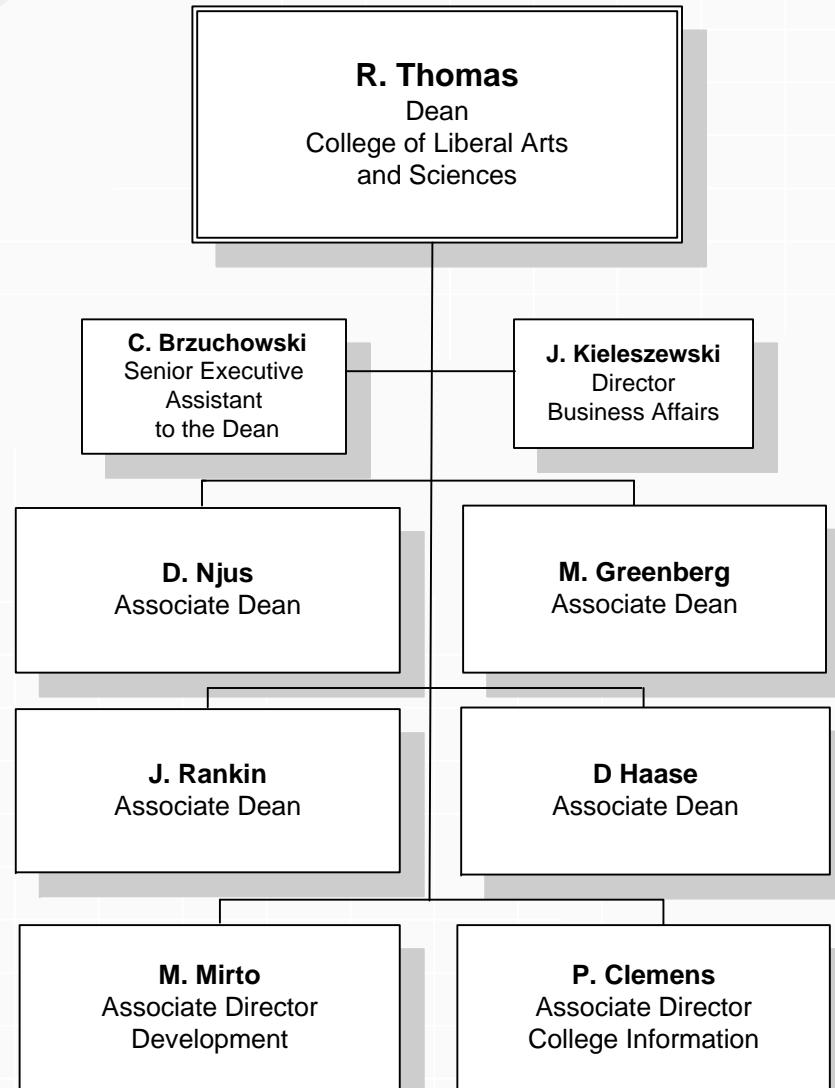
September 15, 2009



COLLEGE OF LIBERAL ARTS AND SCIENCES

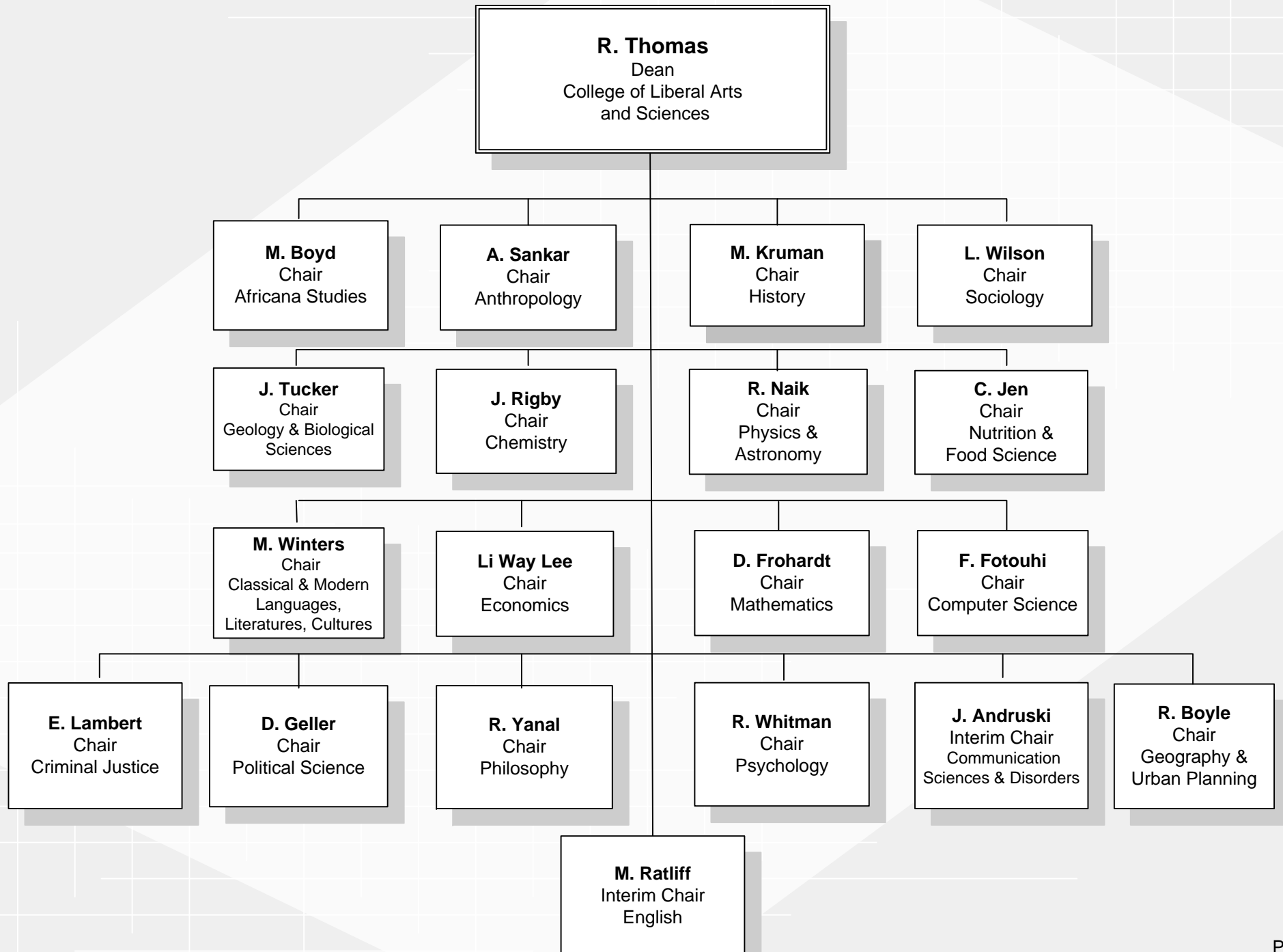
Administrative Structure

September 15, 2009



COLLEGE OF LIBERAL ARTS AND SCIENCES

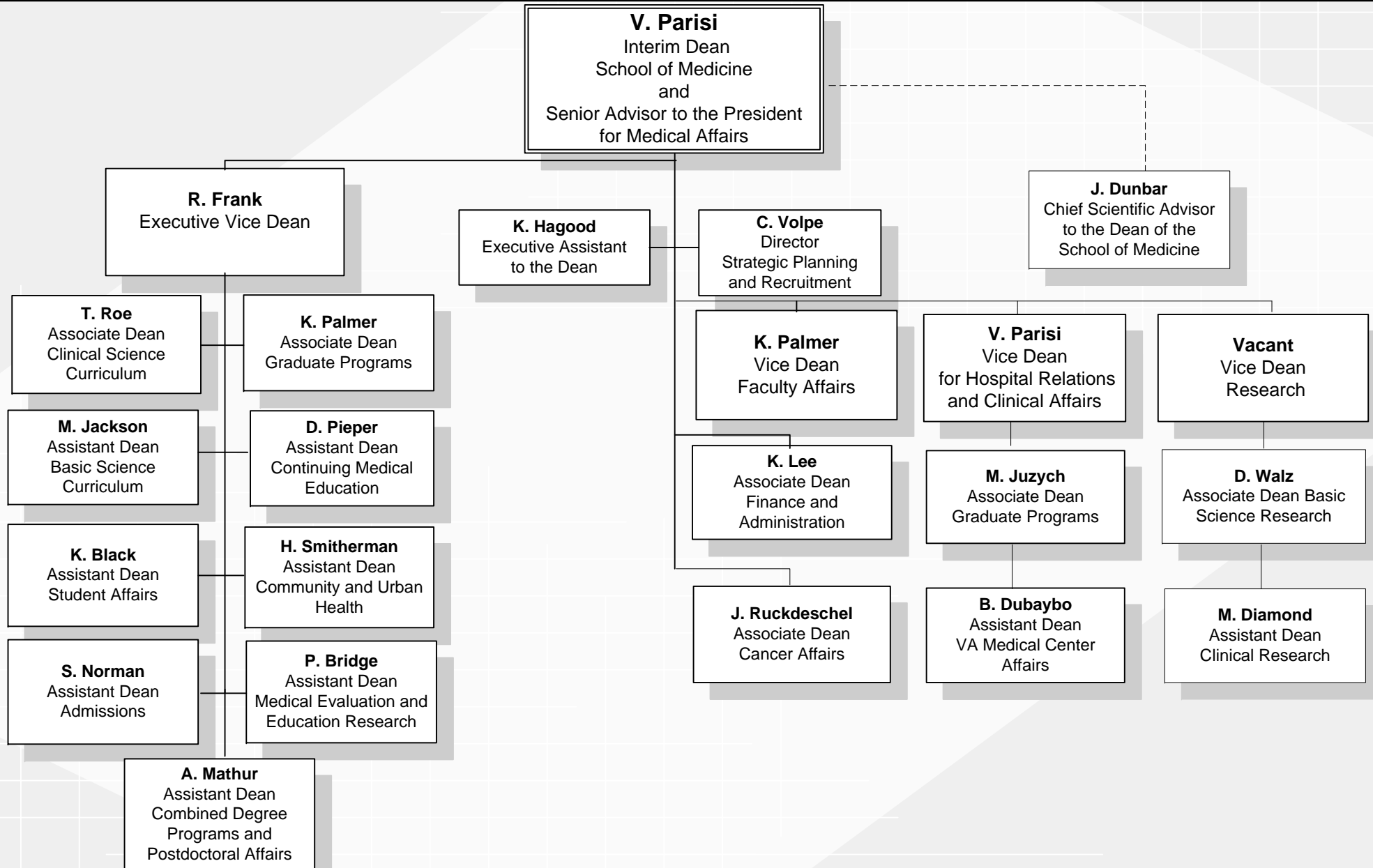
September 15, 2009



SCHOOL OF MEDICINE

Administrative Structure

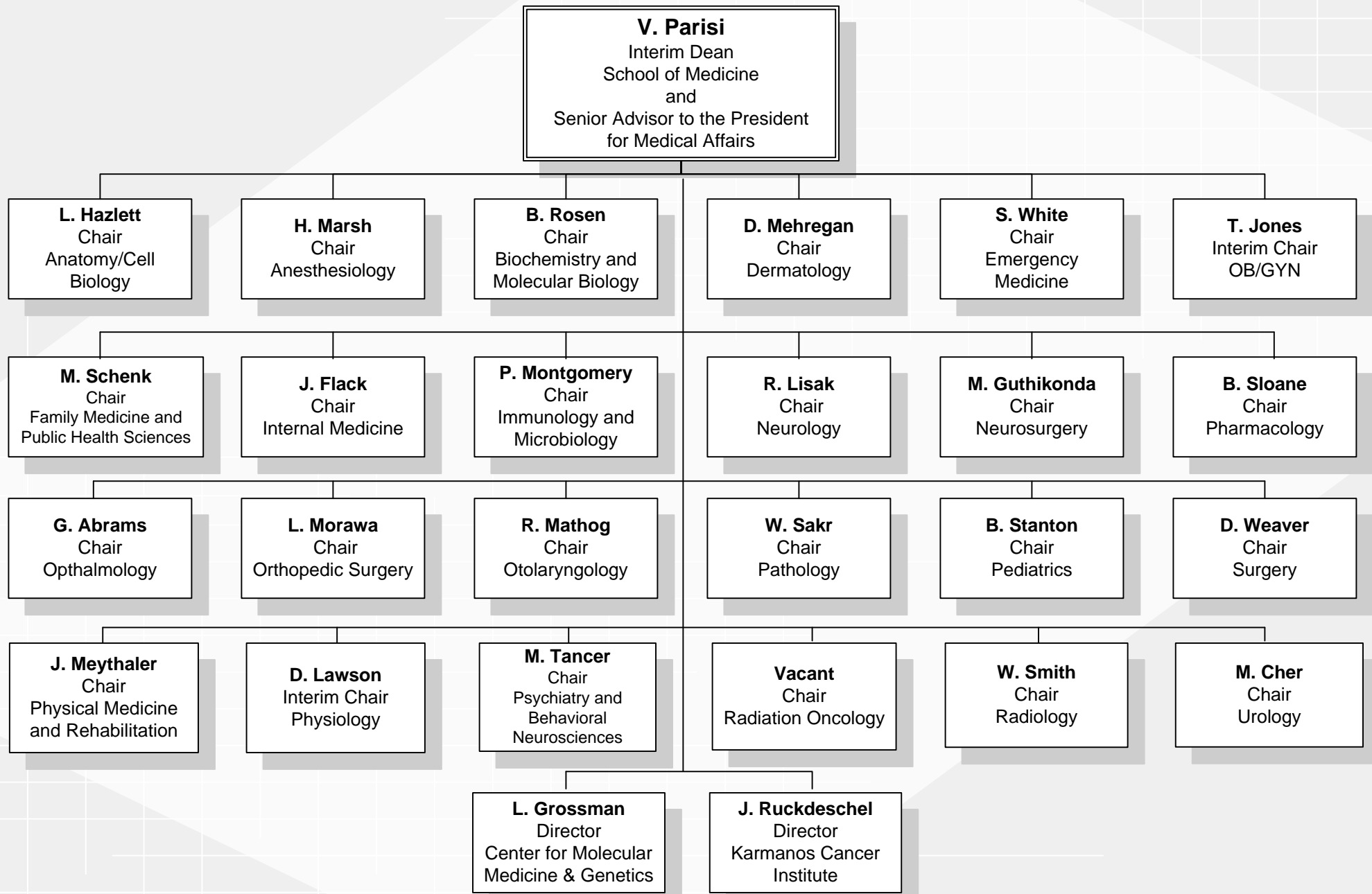
September 15, 2009



SCHOOL OF MEDICINE

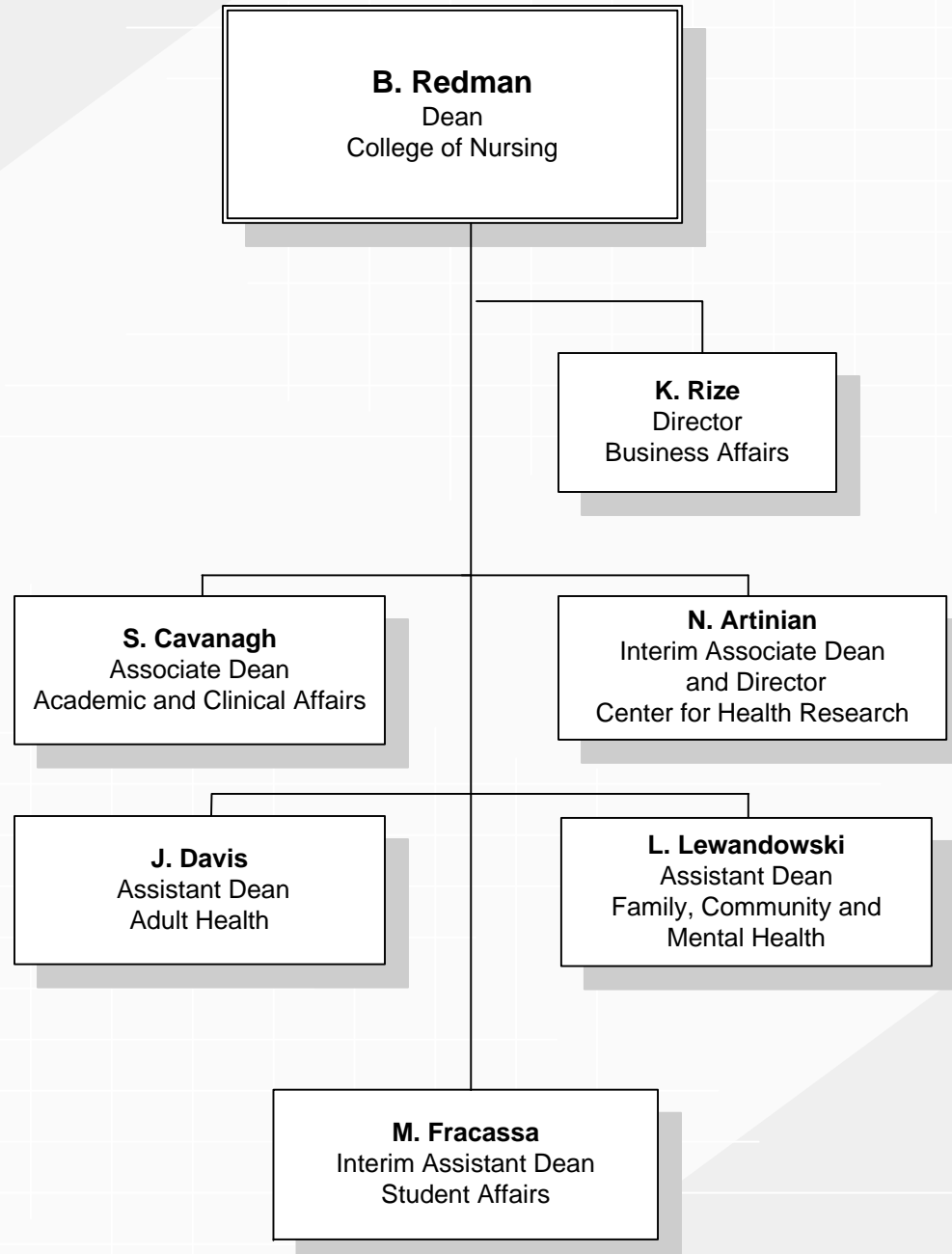
Departments, Centers and Institutes

September 15, 2009



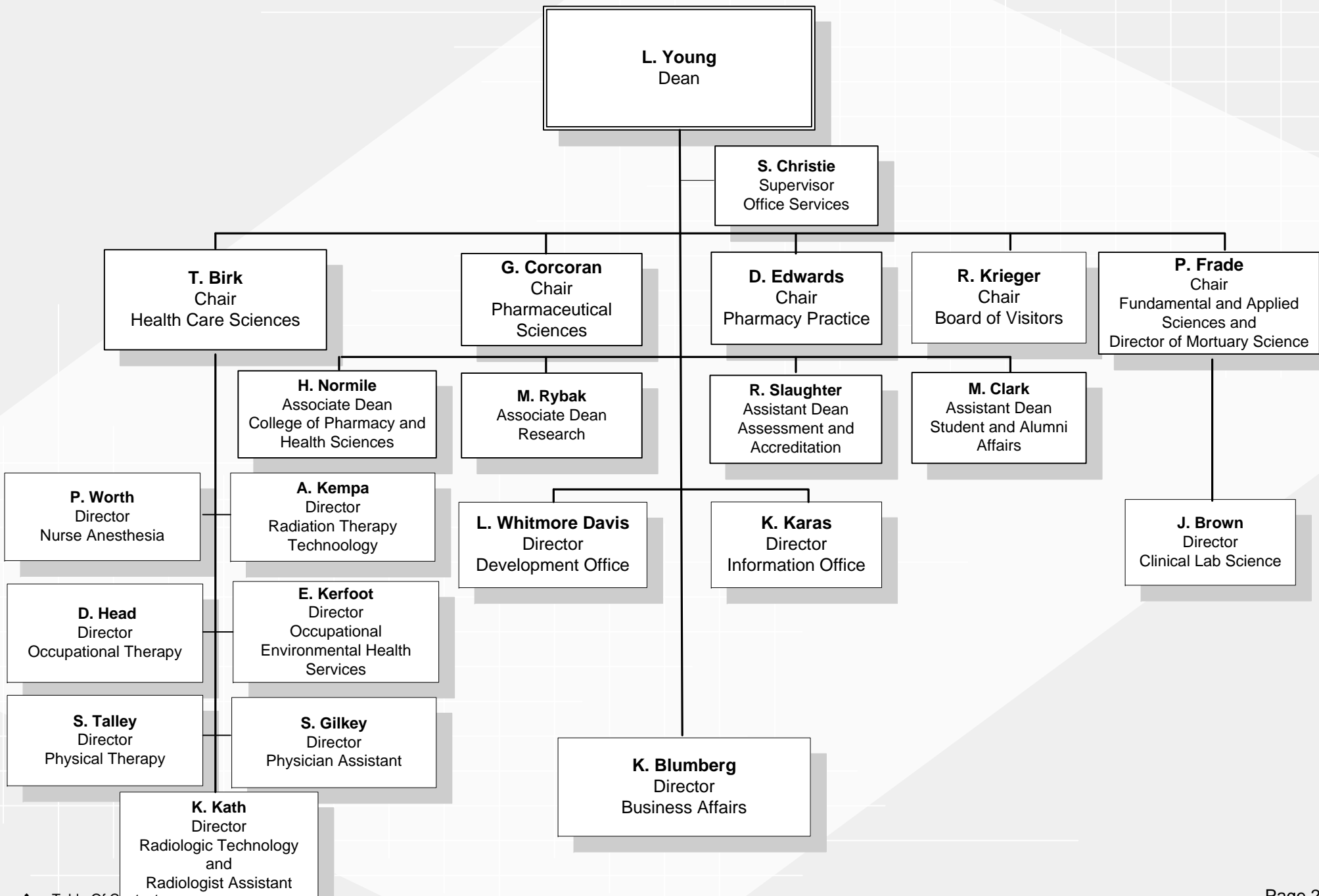
COLLEGE OF NURSING

September 15, 2009



EUGENE APPLEBAUM COLLEGE OF PHARMACY AND HEALTH SCIENCES

September 15, 2009



SCHOOL OF SOCIAL WORK

September 15, 2009

